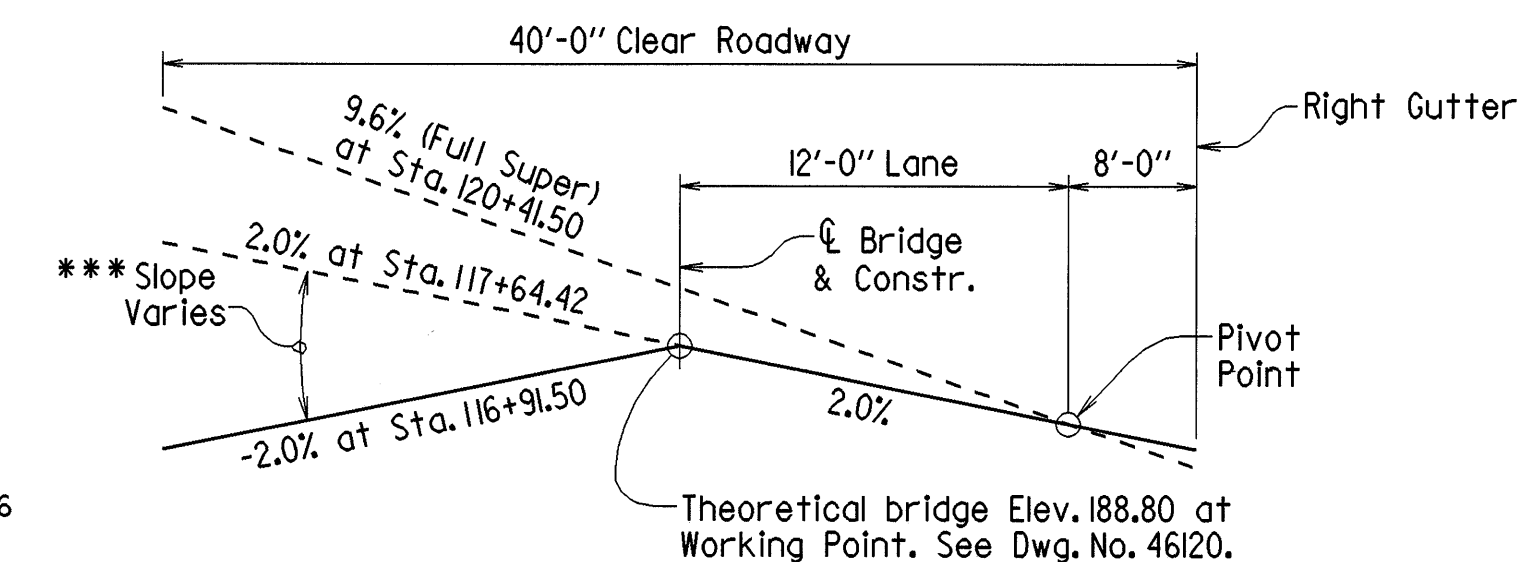


DATE REVISED	DATE FILMED	DATE REVISED	DATE FILMED	FED. ROAD DIST. NO.	STATE	FED. AID PROJ. NO.	SHEET NO.	TOTAL SHEETS
				6	ARK.			
				JOB NO.		110387	30	96
				① 06978 - LAYOUT-WALNUT LAKE - 46110				

***Note: The left gutterline of the bridge from Sta. 116+21.50 to Sta. 117+61.50 has been smoothed with a correction equation. In this area, the roadway slope at any station is a straight line between the centerline and the left gutterline.



CROSS SLOPE TRANSITION SKETCH
Looking Ahead

HYDRAULIC DATA

FLOOD DESCRIPTION	FREQUENCY	DISCHARGE	*NATURAL WATER SURFACE ELEVATION	WATER SURFACE ELEV. WITH BACKWATER
	YEARS	CFS	FEET	FEET
Design	50	6890	182.3	182.4
Base	100	7630	182.6	182.7
Extreme	500	9260	183.3	183.4
Overtopping	>500	-	-	-

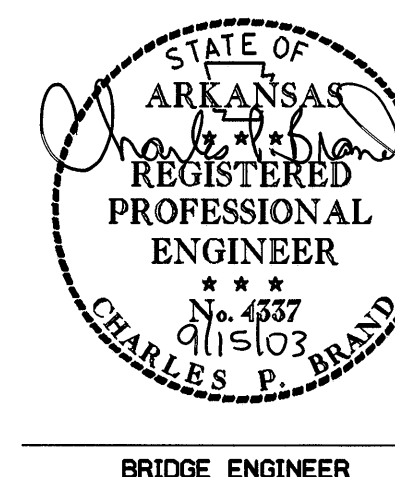
*Unconstricted water surface without structure or roadway approaches.
Drainage area = 183.0 square miles.
Historical H.W. Elev. = N/A

Bent No.	Deck to Low Side Top of Cap
2	4'-3 3/8"
3	4'-3 3/4"
4	4'-3 3/4"
5	4'-6 1/8"

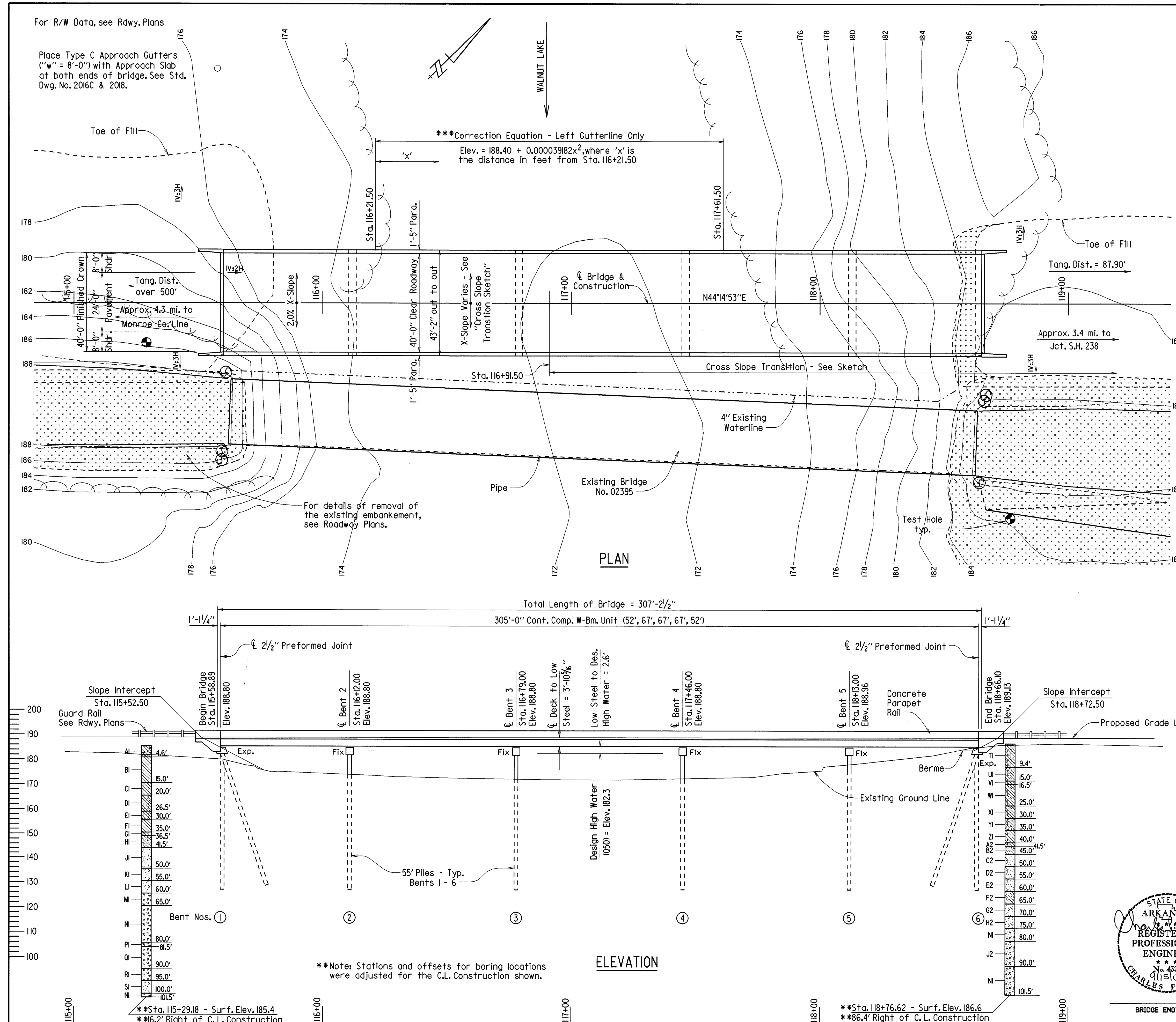
For General Notes & Boring Legend, see Dwg. No. 46111.

LAYOUT OF BRIDGE OVER
WALNUT LAKE
WALNUT LAKE & BIG CYPRESS CR.
STRS. & APPRS. (S)
LEE COUNTY
ROUTE 79 SEC. 15
ARKANSAS STATE HIGHWAY COMMISSION
LITTLE ROCK, ARK.

DRAWN BY: KDH DATE: 3-12-03 FILENAME: B110387.LI
CHECKED BY: KWH DATE: 7-19-03 SCALE: 1" = 20'
DESIGNED BY: PWA DATE: March 03
BRIDGE NO. 06978 DRAWING NO. 46110



BRIDGE ENGINEER



***Note: Stations and offsets for boring locations were adjusted for the C.L. Construction shown.

ELEVATION

*Sta. 115+29.18 - Surf. Elev. 185.4
*16.2' Right of C.L. Construction

*Sta. 118+76.62 - Surf. Elev. 186.6
*86.4' Right of C.L. Construction